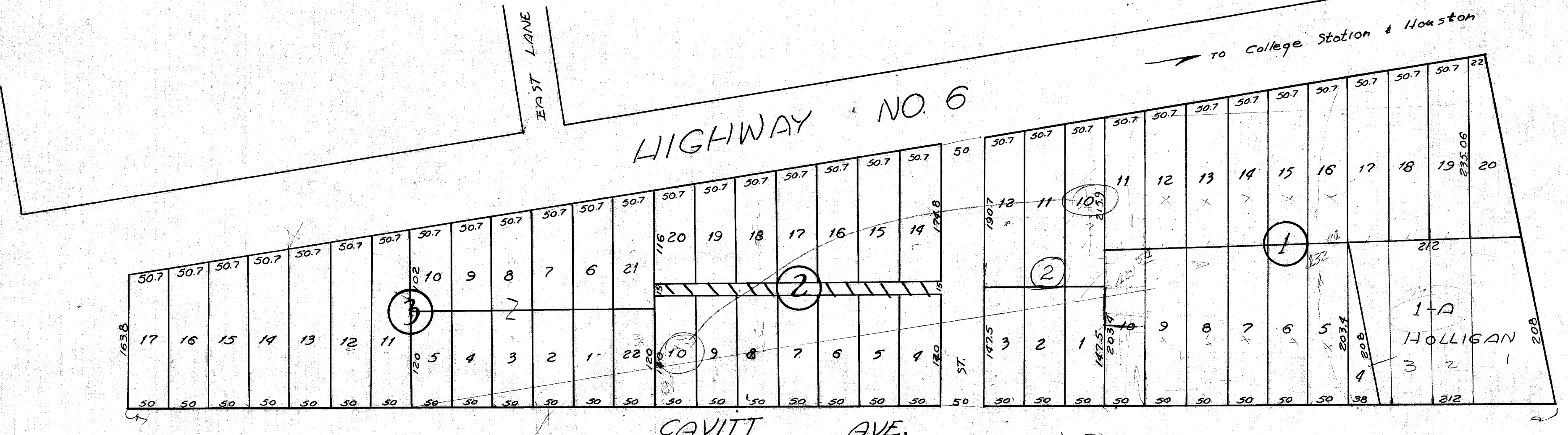


W.S. HOWELL'S REVISED  
WATSON ADDITION

D/R 91 P. 356  
SCALE 1" = 100'  
JUNE 22, 1936

WATSON

to College Station & Houston



HIGHWAY NO. 6

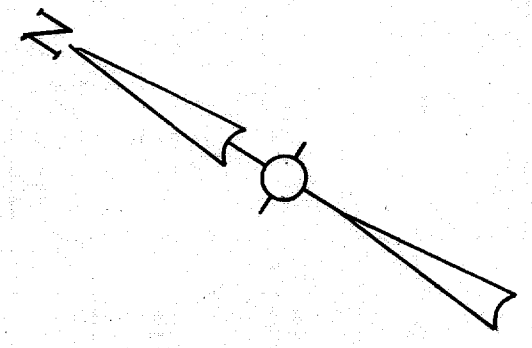
CAVITT AVE.

HOUSE ST.

ROSS ST.

GLENWOOD

McKINNEY ST.



374

113-A  
232